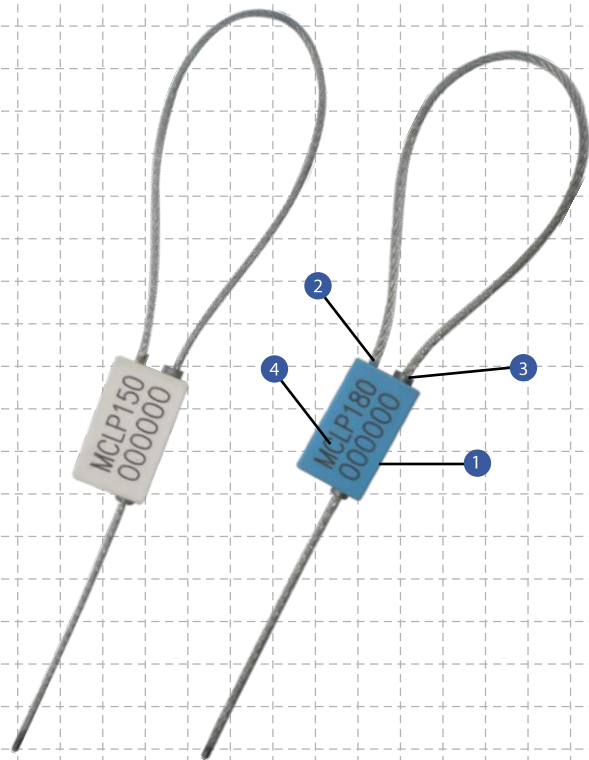


Mini Cable Lock Premium Security Seal



Affordable, Pull-tight Plastic Cable Seal

1. Moulded with high-impact ABS material with a galvanized steel wire rope. The high-resilient ABS material does not break easily but will clearly show evidence of tampering.
2. One end of the cable is permanently secured into the locking body.
3. The protruding lip feature, made of zinc cast at the entry and exit hole provides greater security against tampering.
4. Mini Cable Lock Premium is etched with permanent laser marking for name, logo, sequential numbers and barcode. Laser marking offers the highest level of security as it cannot be removed or replaced. The body is slightly larger to enable marking of more digits.

Specifications

Product	Material	Cable Length	Cable Diameter	Pull Strength	Marking Area	Max Marking Digits
MCLP 150	ABS moulded body with galvanized steel wire rope	180mm *	Ø 1.5 mm	150kg	Body: 22mm x 12mm	6
MCLP 180		180mm *	Ø 1.8 mm	300kg	Body: 22mm x 12mm	6

Product	INNER CARTON			Weight kg/carton	Volume m ³ /carton	OUTER CARTON		
	Quantity	Dimensions	Weight kg/carton			Volume m ³ /carton		
MCLP 150	500 pcs	300mm x 280mm x 170mm	5.25	0.01428	9,000 pcs	930mm x 860mm x 340mm	97.50	0.27193
MCLP 180	500 pcs	300mm x 280mm x 170mm	5.85	0.01428	9,000 pcs	930mm x 860mm x 340mm	108.30	0.27193

Standard Colours blue, green, orange, red, yellow, white & white barcode * Customized lengths available

Cost-effective Cable Seal

The Mini Cable Lock Premium is very user-friendly and highly tamper evident. This seal can be applied to secure various applications for a range of security requirements.

The Mini Cable Lock Premium is widely used on trucks, tanker trucks, air cargo containers, shipping containers, rail cars, calibrators and valves.



Be assured of better security with our innovative use of materials and industrial design.

Hilltop Products Ltd
Parkside Business Park
Kirkstead Way
Golborne
WA3 3PY
Tel: 01942 723101
Fax: 01942 273817

www.hilltop-products.co.uk

Email: sales@hilltop-products.co.uk

