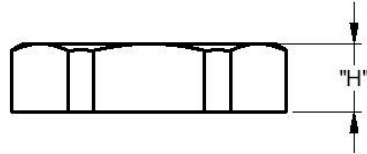
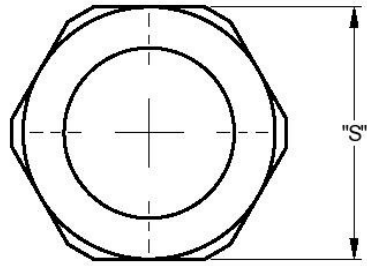


REV.	MODIFICATION.	DATE	DRN
01	PRODUCTION RELEASE	21/03/12	SF



LOCKNUT				
PART NUMBER		THREAD SIZE	"S"	"H"
BLACK	GREY			
467585	467741	PG 7	18[.708] - 19[.748]	5[.196]
467586	467442	PG 9	22[.866]	
467587	467743	PG 11	24[.944]	
467588	467744	PG 13.5	27[1.06]	5.5[.216]
467589	467745	PG 16	30[1.18]	
467591	467746	PG 21	36[1.41]	6[.236]
467593	467747	PG 29	46[1.81]	7[.275]
467594	467748	PG 36	59[2.32] - 60[2.36]	8[.315]
467598	467752	M 12	19[.748]	5[.196]
467600	467753	M 16	22[.866]	
467602	467754	M 20	27[1.06]	5.5[.216]
467605	467755	M 25	33[1.29]	6.5[.255]
467608	467756	M 32	39[1.53] - 42[1.65]	8[.315]
467610	467757	M 40	50[1.96] - 52[2.04]	7[.275]

ALTERNATE DIMENSIONS FOR REFERENCE ONLY

 Hilltop <small>Insulation sleeving products Ltd.</small>		ALL DIMENSIONS IN mm GENERAL TOLERANCES ±0.25 UNLESS OTHERWISE STATED 1 DECIMAL PLACE ±0.25 2 DECIMAL PLACES ± 0.10 ANGULAR ±1°	THIRD ANGLE
MATERIAL: NYLON 6 (RMS-445)		COLOUR: SEE TABLE	
DESCRIPTION: LOCKNUT		PART No: SEE TABLE	
DRG No: 012-037	PROJECT NUMBER: EU12-0035-3	SHEET SIZE A4	
DRN SF	DATE 20/03/12	CHKD TC	DATE 21/03/12
SCALE NTS	SHEET No. 1 OF 1		