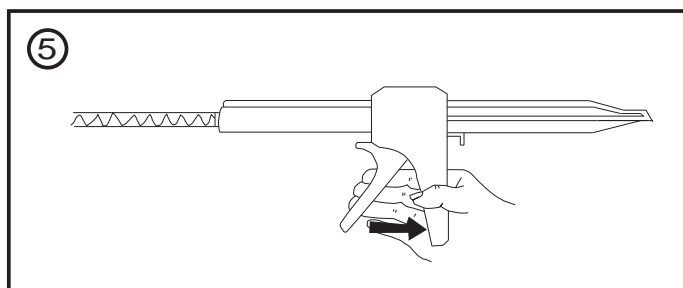
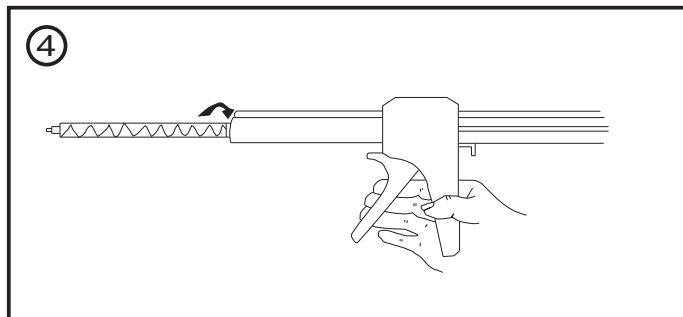
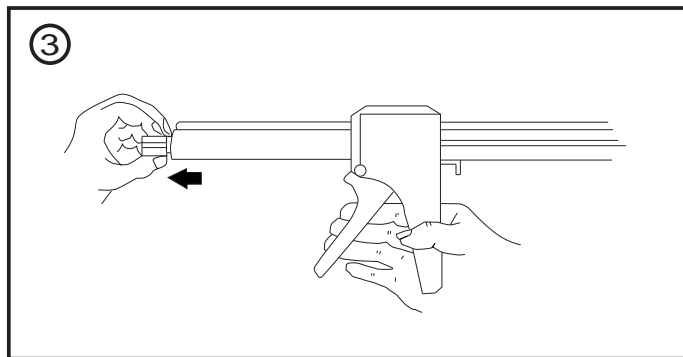
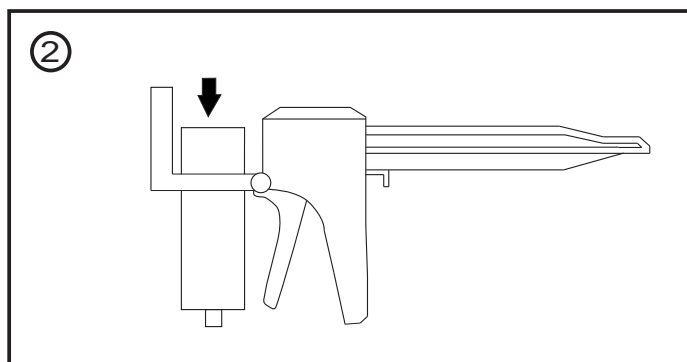
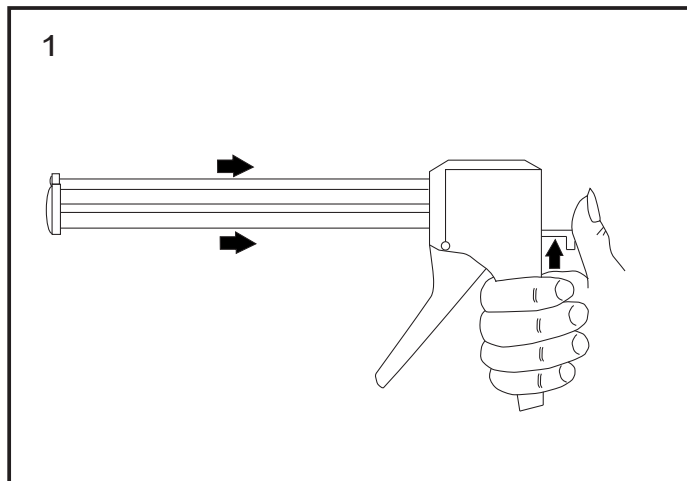


Figures



Stock No.

503-379

Assembly instructions

1. Push up lever, slide in double barrelled piston with ratchet side downwards.
2. Pull cartridge fixing bracket forward, slide cartridge into hole in fixing bracket. Push bracket back and clip onto gun.
3. Remove cartridge sealing cap, twisting anti-clockwise.
4. Attach appropriate mixer nozzle, twisting clockwise.
5. Gently squeeze trigger to dispense. Release trigger to stop dispensing. Leave mixer on cartridge and replace with new mixer when ready to use again. Push up lever. Withdraw piston fully and remove cartridge for storage.

Accessories

Item

Epoxy mixing nozzle - 503-385
Acrylic mixing nozzle - 239-7788

Adhesives

RS quick set Epoxy - 850-934
Loctite acrylic 3295 - 184-7973
Devcon 2 ton epoxy - 236-8011
Devcon 5 minute epoxy - 236-7995
Devcon epoxy plus - 236-8061
Devweld 530 methacrylate - 236-8099
Devweld 531 methacrylate - 236-8134