

HILCON Jumbo Conduit - Flexible Convuluted Tubing



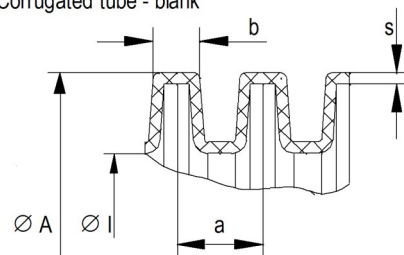
Hilcon Conduits are made of a modified polypropylene. They are characterised by high thermostability and cooling impact strength and can be used because of their good chemical stability in almost all areas of a vehicle. Hilcon jumbo/large convoluted tubing is cadmium free and UV steady.

Chemical Stabilities (in the direct contact)

Gasoline's with 23°C	Well steady
Brake Fluids with 23°C	Well steady
Antifreeze (+H2O) with 23°C	Well steady
Cleaning agent with 23°C	Well steady
Lubricant and fat with 23°C	Well steady
Acids (strongly diluted)	Well steady
Acids generally	Moderately steady



Corrugated tube - blank



Part Number	Size	O/D mm	I/D mm	a mm	b mm
HILCON-UW-56-0-CLS	56	67.9	56.3	8.20	5.00
HILCON-UW-70-0-CLS	70	79.2	66.7	9.00	5.40
HILCON-UW-90-0-CLS	90	106.0	89.0	8.70	4.70
HILCON-UWX-56-colourcode-CLS	56	67.3	52.3	8.20	5.00
HILCON-UWX-70-colourcode-CLS	70	80.3	64.3	8.30	5.80
HILCON-UWX-90-colourcode-CLS	90	105.0	87.0	8.30	5.70

Colour Codes: Black = 0, Grey = 8

UW = Available in Black and Un-Slit

UWX = Available in Black/Grey and Unslit/Slit

Properties/Technical data

Continuous temperature	-40°C till + 130°C
Brief application temperature	+ 150°C
Density (ISO R 1183)	0,91 till 0,93 g/cm³
Moisture absorption	<0,1%
Yield point (DIN 53 455)	15 - 20 Mpa
Elongation (DIN 53 455)	>300%
E-Module (ISO 527 c)	500 - 700 MPa
Dielectric strength (DIN 53 453)	Without break
Tensile impact strength (DIN 53 453)	Without break
In flammability	FMVSS 302 (v<75mm/min) UL 94—V2