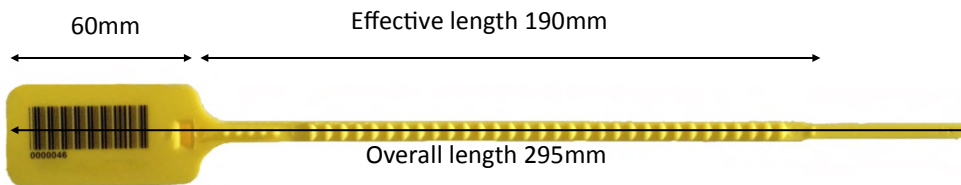


Tracewaste Tear-off Pull Through Seals



The Tracewaste Tear-off is an alternative model with a tear-line for easy removal of the seal, without the use of any tools.

This model is otherwise identical to our standard Tracewaste seal, featuring a large paddle for high-quality thermal transfer or hot-foil printing. Available in red, yellow or green as standard.



Applications

Freight containers & doors, curtain side buckles, storage bins, ID tags, sprinkler systems, tractors & trailers, toteboxes, clinical waste & cash bags, airline cargo, rollcages, document containers.



Options

Polypropylene tear-off model
Full range of colours available:-

Thermal transfer or hot foil printing:

Names, logos, telephone numbers, sequential numbers, white write-on surfaces, barcoding

NEW! Double-sided printing now available!

Packaging

Quantity: 1000
Carton Dim: 305x305x400mm (4kg)
Mats of 10 seals