

**LEISTER**

PLASTIC WELDING

# ELECTRON ST

**Strong, compact  
and handy**

[www.leister.com](http://www.leister.com)

**NEW!**



**We know how.**

## ELECTRON ST – Strong, compact and handy

The new ELECTRON ST is a real powerhouse among Leister's hand tools. The appearance of this tool has been modeled after the new TRIAC range. For the user, this means improved ergonomics and, as a result, the ability to work in more comfort. Existing ELECTRON nozzles fit the new model.

### Product advantages

1



#### Powerful:

Suitable for any application thanks to its outstanding power rating of up to 3400 W.

2



#### Perfectly ergonomic:

3.5 ounces lighter and with a 2 component handle that's nearly 1/2 inch slimmer than its predecessor.

3



#### Infinitely adjustable:

Easy air temperature adjustment up to 1202°F.

1



4



#### Clean:

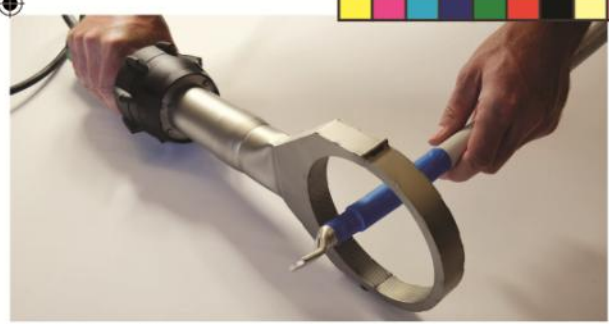
Air filters, located on either side, can be removed and cleaned in no time at all.

5



#### Compatible:

All predecessor nozzles fit the ELECTRON ST.



Shrinking cable connections is just one of many applications for which the ELECTRON ST can be used.

Hot-air hand tool

## ELECTRON ST

- Suitable for all jobsites
- Leister's most powerful hand tool
- Easy-clean air filter
- Carbon brush stop and heating element protection provide automatic protective measures
- Sturdy tool case supplied
- Swiss made

### Technical data

Voltage	V~	230	230	200	120
Power	W	2300	3400	3400	2400
Temperature	°F	104 – 1202			
Size (L × Ø)	inch	13.3 × 3.5, handle Ø 2.2			
Weight	lbs	2.4 without connection cable			
Conformity mark		CE			
Protection class II		□			

#### Article No.

149.673 ELECTRON ST 230 V/2300 W for push-fit nozzles with Euro plug \*

145.562 ELECTRON ST 120 V/2400 W for push-fit nozzles with US plug

\* Please ask about availability

### Accessories, ELECTRON ST

	<b>107.258</b> Wide slot nozzle, push-fit 2.8 × 0.4 inch, for bitumen
	<b>107.266</b> Wide slot nozzle 2.9 × 0.12 inch, push-fit, for bitumen including stand (article 116.753)
	<b>107.270</b> Wide slot nozzle 5.9 × 0.5 inch, push-fit
	<b>107.229</b> Round nozzle 0.8 inch
	<b>107.331</b> Hinged reflector 2.83 × 2.8 inch, push-fit
	<b>107.327</b> Sieve reflector 3.3 × 3.3 inch, push-fit
	<b>107.333</b> Sieve reflector 5.9 × 4.3 inch, push-fit
	<b>107.340</b> Shell reflector 1.8 × 9.8 inch, push-fit
	<b>107.328</b> Hinged reflector 2.4 × 3 inch, push-fit
	<b>107.348</b> Tool rest
	<b>145.604</b> 120 V / 2300 W heating element <b>145.606</b> 230 V / 3300 W heating element <b>145.605</b> 200 V / 3300 W heating element <b>149.675</b> 230 V / 2200 W heating element